

A lush green forest landscape with a stream in the foreground, used as a background for the central text.

»»»»» LEADER
IN GREEN ENERGY »»»»»

The Best Lithium Solutions



Telecom Solution for Macro & Micro Station

Features of UE-T Series



Absolute Safety

- Ensured the flammability rating of all components UL 94V0.
- Various BMS protection feature.
- Passed international certifications such as UN, UL, IEC, CE, etc.



Remote Monitor

- Supporting RS-485, SNMP, CAN, etc.
- Connecting to the monitor center platform through web monitor equipment.



High Reliability

- Enhanced heat dissipation and dust proof design.
- 4000 cycles life under normal temperature conditions.



Intelligence Hybrid-use

- Interior BMS supports the hybrid use of new and old batteries.
- Supports paralleling with lead acid battery.
- Supports multi module paralleling.



Easy to Maintain

- Professional inspection & maintenance interface.
- BMS replacement panel, no need to open the box to replace.
- Maintenance free design, no need to go to the station frequently.



Anti Theft Solution

- On site Anti theft Surveillance Solution for Telecom.
- Intelligent anti theft solution achieved by buzzer alarm, software lock, gyroscope and GPS (optional).

Suitable for all Various Application to Replace VRLA Battery



UE-T Series Telecom Backup Battery Module	UE-T4820	UE-T4850	UE-T48100B	UE-T48100E	UE-T48200B
Nominal Voltage/Capacity	48V/20AH	48V/50AH	48V/100AH	48V/100AH	48V/200AH
Rated Energy	960Wh	2400Wh	4800Wh	4800Wh	9600Wh
Maximum Allowable Charge/Discharge Current	20A/20A	50A/50A	100A/100A	100A/100A	200A/200A
Cycling life @ 25°C , 0.2C	≥4000				
Size (W*D*H)	442*250*88mm (2U)	442*400*132mm (3U)	442*380*222mm (5U)	442*400 *130mm (3U)	442*590*222mm (5U)
Working Temperature	-10 ~ 60°C				
Weight	Approx. 15.8kg	Approx. 32kg	Approx. 46kg	Approx. 39kg	Approx. 81kg
Mounted	Suitable for 19 inch & 23 inch standard cabinet				
Certification	UL1642/IEC62619/IEC62620/CE-EMC/UN38.3				
Optional Function	LCD/CAN communication/SNMPV2 V3/Dry Contact/GPS/Software lock				

5G Power Supply Solution

UE-TM Series Micro Base Station Power Supply Solution



With good appearance, compact size and low noise low pollution, UE-TM series can be deployed in a variety of application scenarios such as commercial streets, complexes, urban roads, multi storey residential communities, tourist attractions, and remote villages It can be used in harsh environments such as outdoor light pole stations, indoor distributed weak current wells, RRU remote stations, and micro stations.



Simple
Installation

Efficient
Intelligent

Service
Oriented

- A minimalist station construction with no AC no cabinets no computer room design.
- Plug and play. One person can build a station within 2 hours.
- Full support for pole, wall and floor installation.
- Intelligent management for intelligent peak cutting.
- Naturally cooled without AC.
- Input grid type AC/DC automatic switching.
- The capacity can be easily expanded according to business needs.
- Uniform use of waterproof sockets to meet IP65 level.
- Once our product has a problem, we replace the whole machine.



VRLA Replacement Project



The Best Lithium Solutions

01



Requirement

- Lithium battery replaces lead acid backup system.
- Realize the high temperature outdoor cabinet and free air conditioning solution.
- Access operator dynamic environment monitoring.

Solution

- Configure 3-6 48V/100AH batteries according to different sites.
- Optimize system design, quickly install and deploy on site.
- Realize single cabinet power supply + battery + power distribution scheme, reserved space for upgrade.

Provide more than 60,000 100AH module and service for 4+ years

BTS Site Capacity Expansion



Requirement

- Lead acid batteries occupies a large space, and the batteries cannot meet energy consumption needs.
- The cabinet size is limited and cannot accommodate the replacement of large capacity lead acid batteries.

Solution

- Replace VRLA by LFP battery.

Results

- Without changing any parts of the cabinet, directly replace lead acid with lithium batteries, greatly reducing the cost of reconstruction.
- Lithium battery has a long cycle life, reducing the cost of frequent battery replacement.
- Intelligent BMS battery management system, background monitoring data, reducing operation and maintenance costs.

Multi-parallel Large Capacity Backup Center



The Best Lithium Solutions

01



Requirement

- Total power of all devices reach 25kW, and backup time required 2 hours.
- All parameters including cell voltage, cell temperature and alarm/protections must be showed remotely.

Solution

- (13 pcs UE-T48100B modules in parallel 1 PCU) *2 groups.

Results

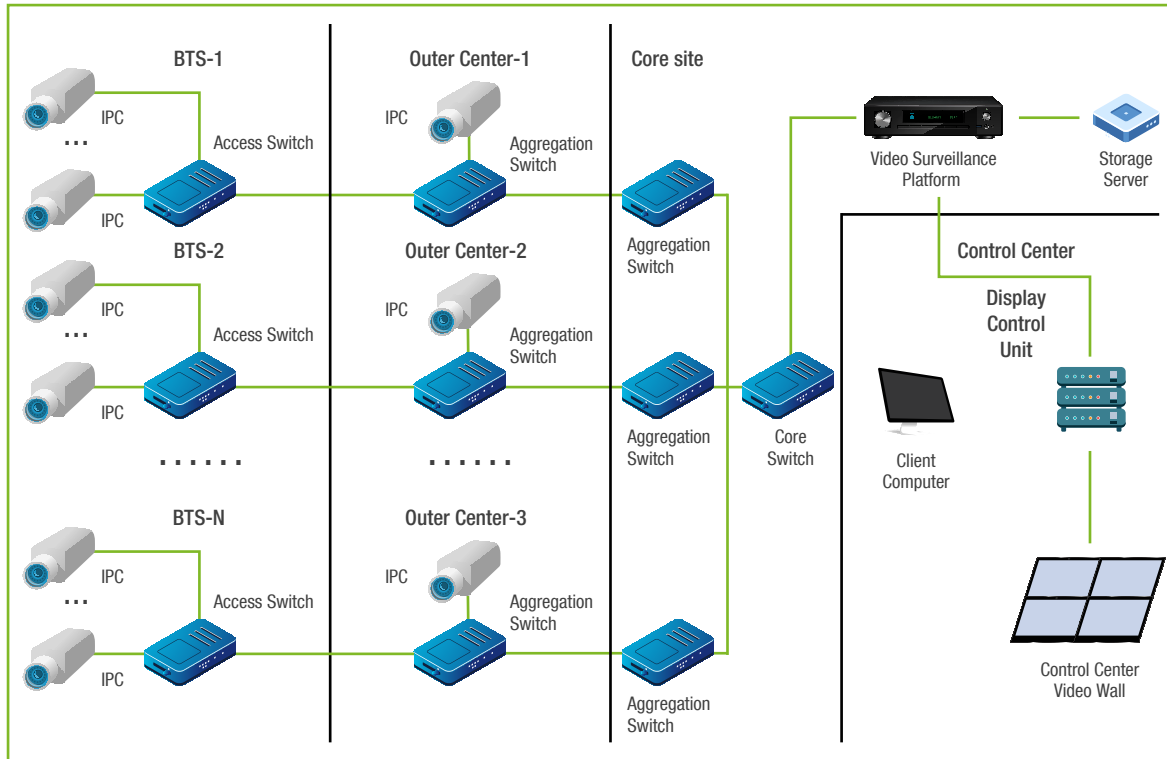
- The project went to use in March 2020 and till now no system failure happened.
- All monitoring controls concentrate at the office, save the labor and cost Intelligent BMS battery management system, background monitoring data, reducing operation and maintenance costs.

On-site Anti-theft Surveillance Solution



CREATE A CLOSED LOOP OF SECURITY IN ALL DIRECTIONS

- Before Theft When an intruder is found, siren warning can be issued in advance.
- During Theft When an intruder commits a crime, the whole process can be recorded through monitoring.
- After Theft After the incident, the lost property can be tracked.



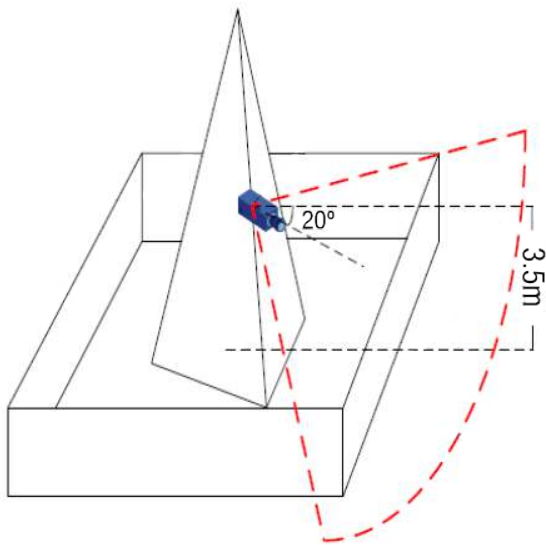
- »» BTS connected to the nearby outer center in the area.
- »» All outer centers connect to the core site.
- »» The management platform and storage server are placed in the core site.
- »» All service controlled in core site.

BTS Monitoring Solution

Multi-angle deployment and effective monitoring range up to 98%!

BTS Tower Deployment

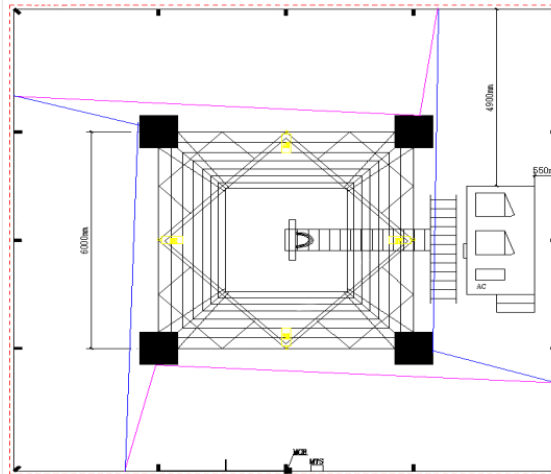
Cover the peripheral areas through high-tower deployment



Tower Mounted

Four Corners on Wall Deployment

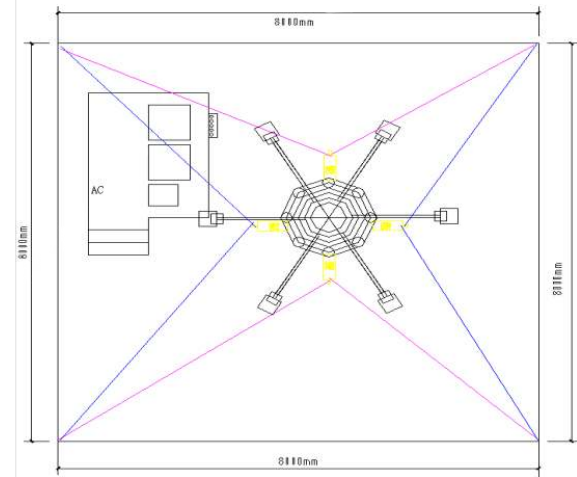
Four-corner deployment presents a three-dimensional vision



Corner Mounted

Single-tube Tower Deployment

Cameras are installed on the four corners of the tower, and the surrounding walls are photographed overhead



Single-tube Tower Mounted

AI Face Recognition Technology



Suspicious persons are identified through AI intelligent detection, sound and light alarms, pre-recorded voice alarms are played, videos and captured pictures are saved, and alarms are sent back to the monitoring center at the same time.

When the monitoring center receives an alarm, an alarm screen will pop up. The security staff can log in to view the alarm through the mobile APP or computer client, handle the alarm event in time, and allocate resources for the alarm event.

Monitoring Center



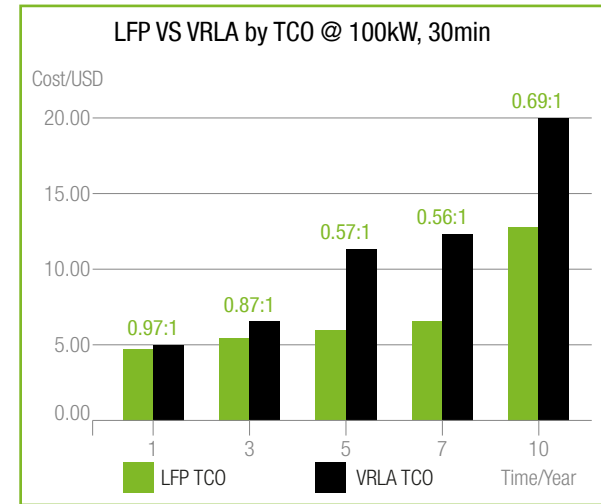
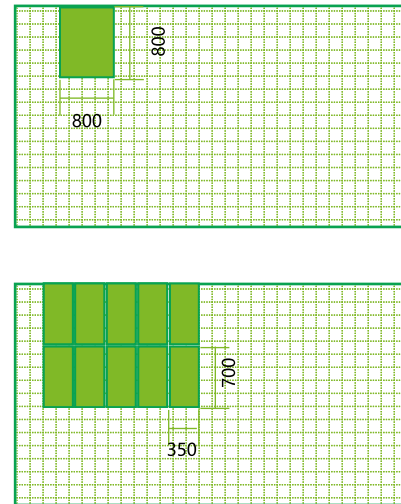
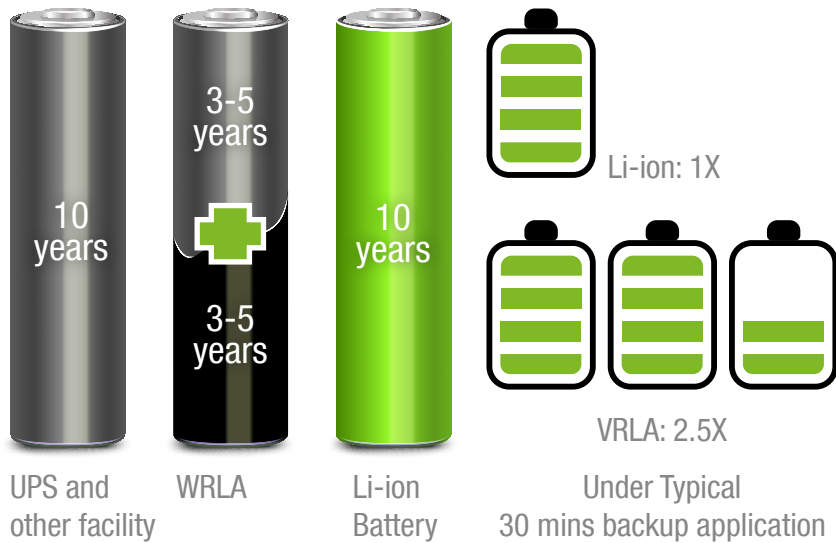
The monitoring center is the core location of the entire monitoring network, which generally consists of two parts the core computer room and the control center.

- The core computer room is a place where central management equipment and central storage equipment are placed. All outer site will be gathered on the platform of the core computer room and then presented to the control center.
- The control center is the place where the business is presented. The security personnel can manage the video surveillance equipment and users in a unified manner Through the large screen and the client, the video preview, playback, permission control and various intelligent application functions (monitoring management, alarm management, storage management, data management, operation and maintenance management, intelligent analysis management, network and device management, APP cell phone and computer client login management, etc).



— IDC UPS/HVDC
Backup Solution

Li-ion Battery vs VRLA Battery comparison in IDC



2-3 Times Expected Longer Life

2/5 Battery Configuration

1/5 Battery Footprint

Less TCO than VRLA battery since the 2nd Year

FlexLi LFP Solution

FlexLi-E LFP Solution

1-10KVA UPS



Scenario

Small and medium facility house, network communications, automatic control, edge computing, bank branches, rail transit, smart communities, smart cities, etc.

FlexLi-V LFP Solution

>10KVA UPS



Scenario

Large, medium and small data centers, large and medium sized enterprise server rooms, smart manufacturing, and communication network service centers.

FlexLi-H LFP Solution

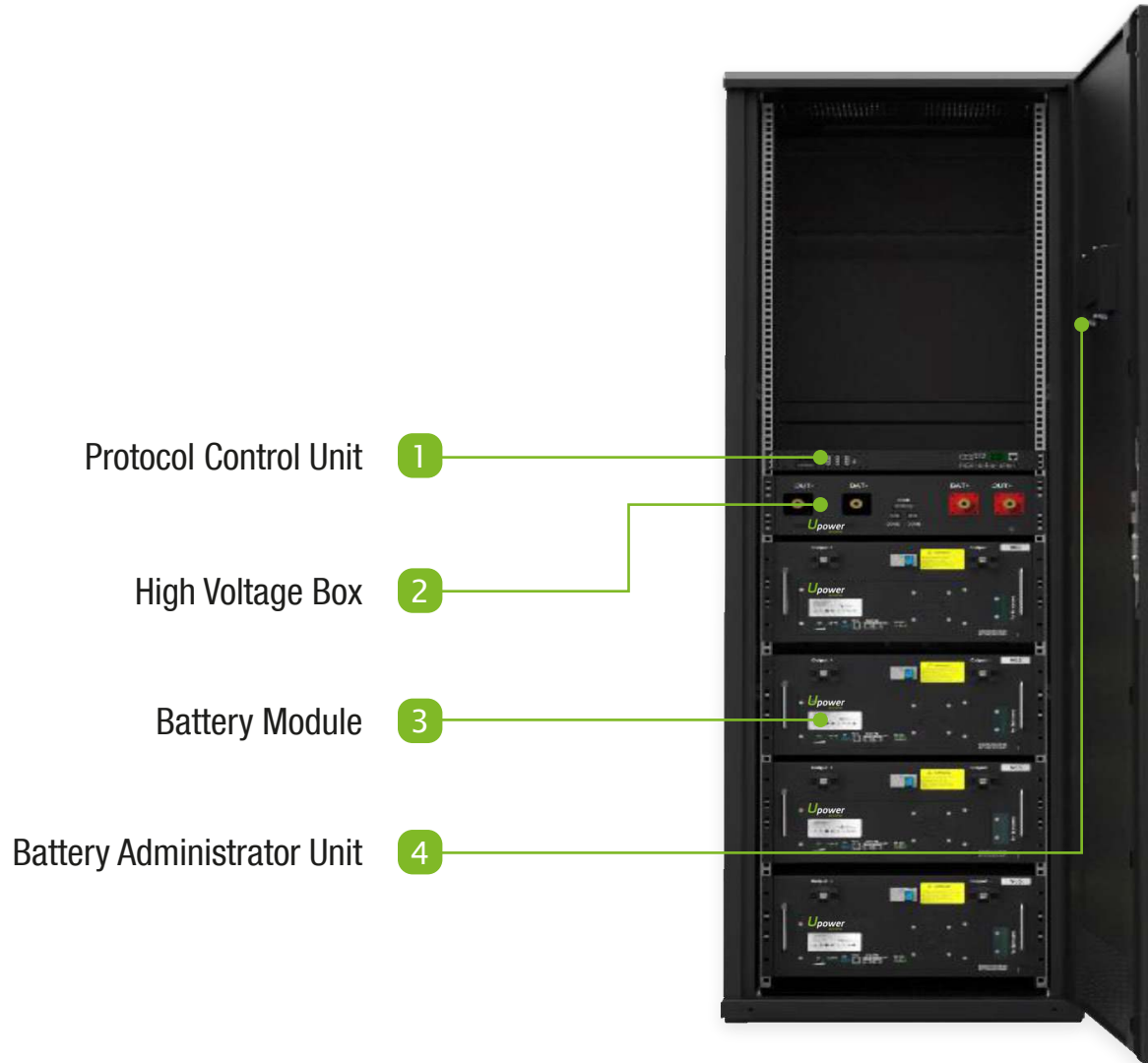
240V/380V HVDC



Scenario

International Data Centers (IDCs), network service centers, etc. in the financial and Internet industries.

FlexLi-E System Overview



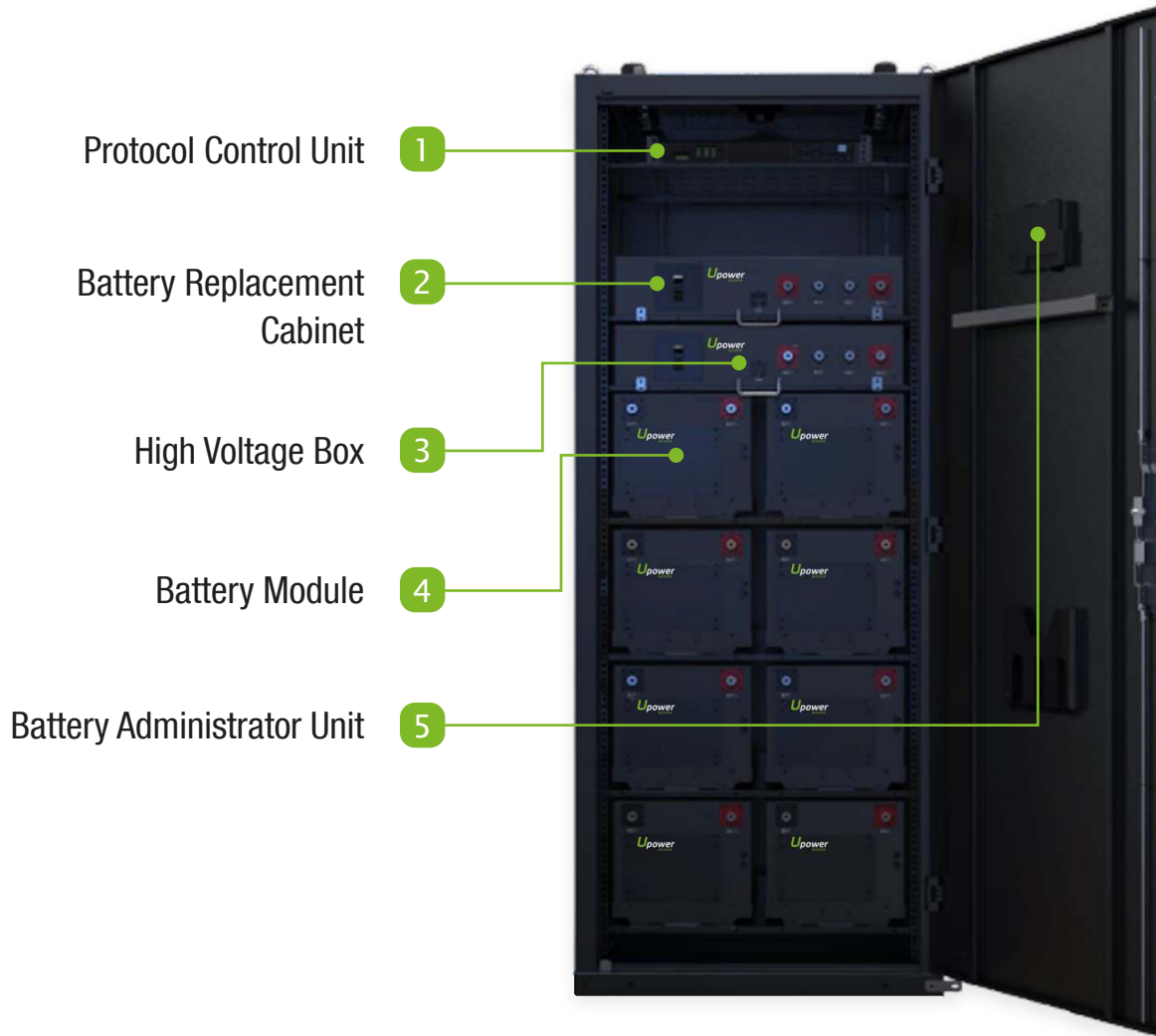
- Rated Voltage: 48-192V (1-4 modules parallel)
- Rated Capacity: 50Ah/100Ah
- Max. Charge Current: 0.5C
- Max. Discharge Current: 1C
- Cycle Life: 4000@80%DOD
- Cable Direction: Top/Bottom
- Cabinet Parallel Capacity: 4 cabinets
- Battery Cell Materials: LiFePO₄
- Backup time: 1h-8h
- 19 inch Standard Frame

FlexLi-V System Overview



- Rated Voltage: 512V
- Operation Voltage Range: 448V~544V
- Rated Capacity: 50Ah/100Ah
- Max. Charging Current: 1C
- Max. Discharging Current: 6C@50Ah/3C@100Ah
- Cycle Life: 4000@80%DOD
- Cable Direction: Top
- Cabinet Parallel Capacity: 20 cabinets
- Battery Cell Materials: LiFePO₄
- Backup Time: 10min-30min

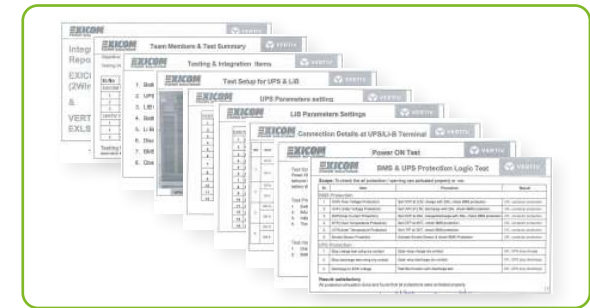
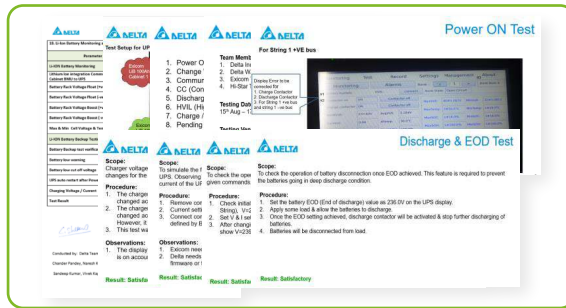
FlexLi-H System Overview



- Rated Voltage: 256V
- Operate Voltage Range: 224V~272V
- Rated Capacity: 50Ah
- Max. Charging Current: 1C
- Max. Discharging Current: 6C@50Ah
- Cycle Life: Above 2000@80%DOD
- Cable Direction: Top
- Cabinet Parallel Capacity: 10 cabinets
- Battery Cell Materials: LiFePO₄
- Backup Time: 5min-30min

UPS Compatibility Test

All test result is pass, Upower products shown excellent performance



With UPS mainstream product: DELTA, EATON, VERTIV

The joint test items as follow:

- 1. Communication Test
- 2. Cycle Life Test
- 3. Power On/Off Test
- 4. Protect Logic Test

Energy Storage System



Portable ESS



Home ESS



I&C ESS



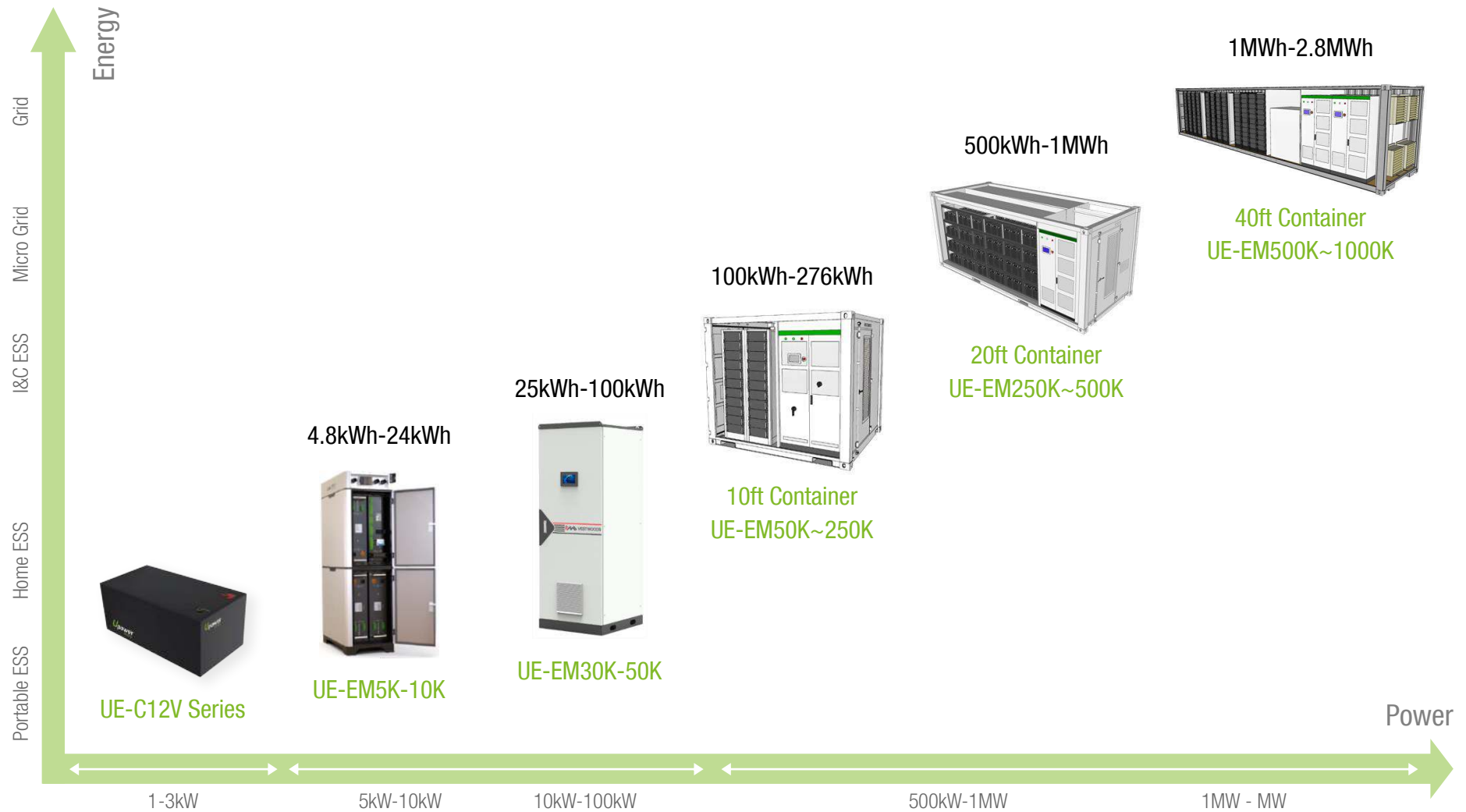
Micro Grid System



Grid ESS Solution

Product Spectrum: From Portable to the Grid

ESS Product Range



Simple VRLA Replacement Battery



Encube UE-C Series

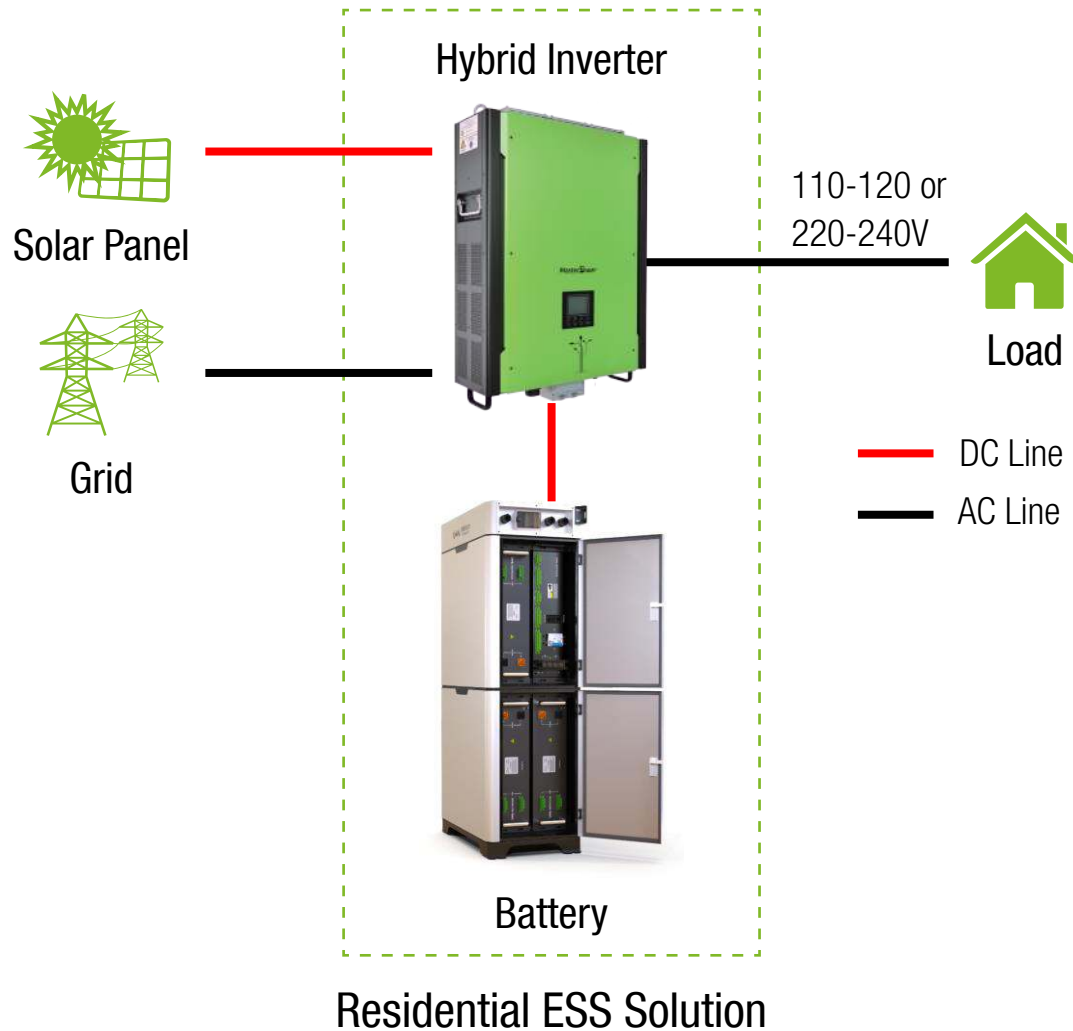
- High energy density
- Large capacity
- Maintenance Free
- Competitive price

AC Devices	Mini fridge (200W) 3.5 - 12 Hours	Electric drill (500W) 1.3 - 1.7 Hours	TV (60W) 10.5 - 13.7 Hours
	Electric grill (800W) 0.85 - 1 Hours	Deep fryer (700W) 1 - 1.5 Hours	Fan (18W) 10.5 - 13.7 Hours
	CPAP machine (40W) 15 - 20 Hours	Desktop PC (200W) 3.3 - 4.3 Hours	Table lamp (40W) 15 - 20 Hours
DC Devices	Drone (60W) 10 - 13 Times	Laptop (50Wh) 12 - 16 Times	Camera (30W) 22 - 30 Times
	GoPro (14.5Wh) 45 - 61 Times	iPad (15Wh) 45 - 61 Times	Phone (12Wh) 56 - 61 Times

Item	UE-C12120/UE-C12160/UE-C12180/UE-C12200	
Nominal Parameters	Nominal Voltage	12.8V
	Nominal Capacity	120/160/180/200Ah
Mechanical Parameters	Dimensions (L*W*H)	520*267*220mm
	Weight	30kg
Electrical Parameters	Charge Voltage Range	14.6V
	Discharge End Voltage	10V
	Max. Charge Current	60A
	Max. Discharge Current	60A
Others	Cell	Prismatic LFP
	IP Level	IP 67
	Operation Temperature	Charge: 0 ~ 55°C Discharge: -20 ~ 55°C



Residential ESS: Making clean energy beneficial to every house



We're passionate to play a role of energy revolution and network transformation.

Our residential energy storage solution cover single phase 3kW, 5kW and three phase 10kW, this range is designed for PV self-consumption, back-up power, load shifting and off-grid solutions for household applications.

What is the benefit for HESS?

- Save money.
- Back-up power.
- Energy independence.
- Environmentally friendly.

Residential ESS Configuration

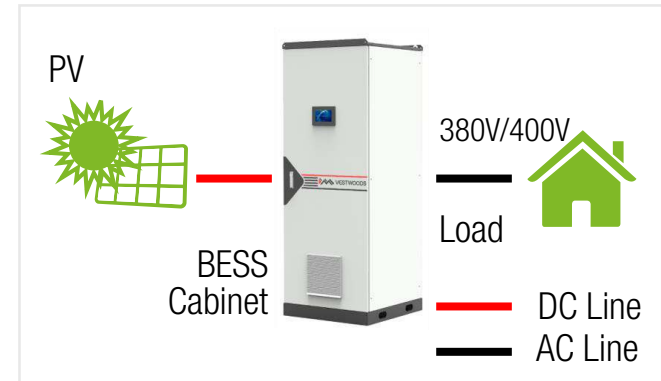
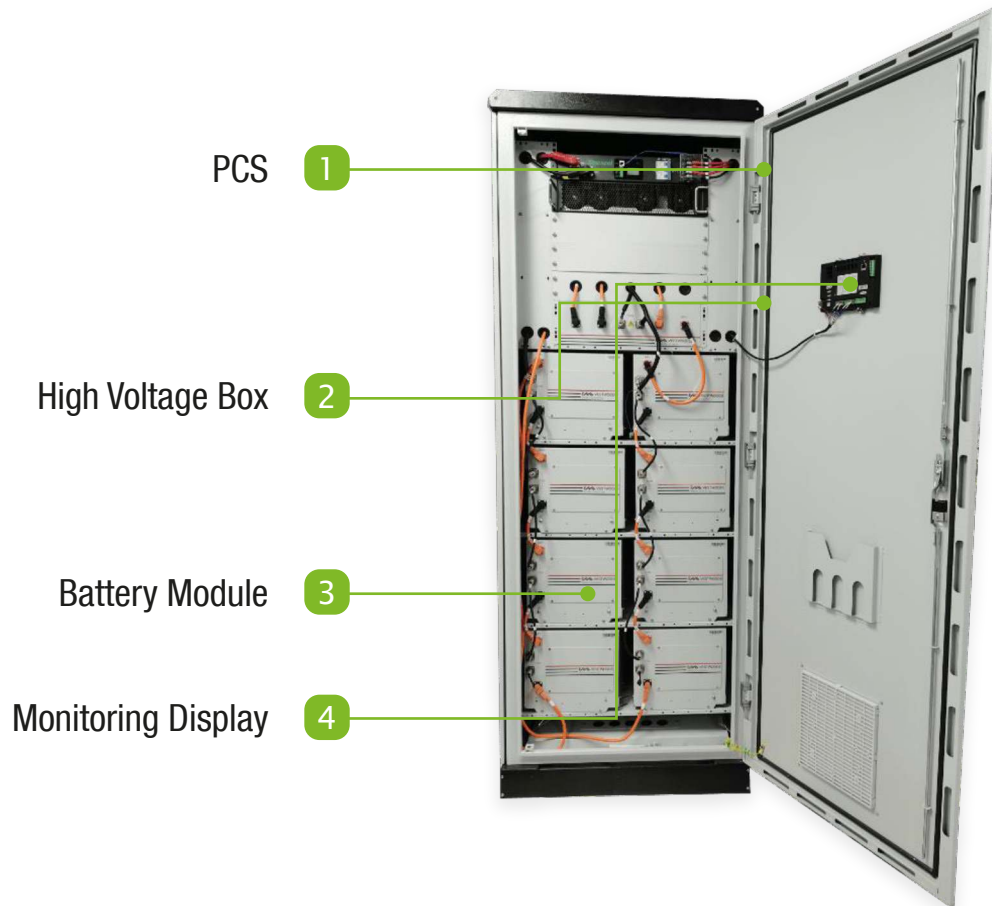


- Nominal AC Output Power: 10kVA (12.5kVA max)
- AC output voltage: 120/240V
- AC output current: 41.7A
- Peak Efficiency: 98.2%
- AC Connection: split phase, 1Ø, 230 1 phase
- Battery Nominal Voltage: 144V
- Battery Voltage Range: 117V~162V
- Battery Capacity: 100Ah
- Max Charging Current: 0.5C

Residential ESS Configuration

Battery Cabinet		Hybrid Inverter			
Type	LFP	Nominal Apparent Power Output	7 ~ 11kVA	Maximum DC Input Voltage (PV)	500V
Battery Module	48V50/100Ah	Max. Apparent Power Output	9.5 ~ 14.25kVA 60S 11.4 ~ 17.1kVA 1S	Maximum Input Current (PV)	13 ~ 14A
Module Quantities	3	Nominal Output Voltage L-N/L1 L2	120/240V	Maximum Charging/Discharging Current (Battery)	62.55/80A
System Voltage	144V	Nominal Output Frequency	60Hz	Battery Voltage Range	150 ~ 336V
System Energy	7.2/14.4kWh	Output THDU	< 2%	Inverter Size (W*D*H) mm	520*350*520
Maximum CHG/DCHG	50/100A				
Battery Cabinet Size (W*D*H) mm	520*350*680	Maximum DC Input Power (PV String Input)	10 ~ 14.82kW	Weight	32kg
IP Rate	IP21	MPPT Range (PV)	85 - 500V	Communication with BMS/Meter/EMS	RS-485, CAN





UE-EM50K System Overview

- Nominal AC Output Power: 30kVA (33kVA max.)
- AC Output Voltage: 400V ($\pm 5\%$ configurable)
- AC Output Current: 42A
- Peak Efficiency: 97.3%
- AC Connection: 3-Phase 4-Wire
- Battery Nominal Voltage: 512V
- Battery Voltage Range: 448V ~ 544V
- Battery Capacity: 100Ah
- Maximum Charging Current: 1C

Commercial & Industrial ESS Solutions



Type	UE-EM10K	UE-EM30K	UE-EM50K	UE-EM100K
Battery Type	LFP			
Battery Voltage	384V	512V		
Battery Voltage Range	336 - 408V	448 - 544V		
Battery Capacity	19.2 - 51kWh		102kWh	204kWh
Max. Charge/Discharge Current	25A	90A	100A	100/200A
Grid Output (AC)				
Rated AC Output Power	10kW	30kW	50kW	100kW
Grid Rated Voltage	400/380V			
Max. AC Output Current	16.5A	43.3A	72A	144A
Rated Grid Frequency	50/60Hz			
AC Output Type	3-Phases, 3L/N/PE			
Power Factor	Approx. 1 (±0.8 adjustable)			
Current Harmonic Distortion	≤3%			
Other				
Compatible Inverter	GoodWe	Sinexcel		
Operation Temperature	-20°C ~ 60°C			
Communication	CAN/RS-485/Wi-Fi (Optional)	Ethernet/RS-485	RS-485, CAN, Ethernet	
Certification	AS/NZS 4777.2:2015 IEC62109-1&2 IEC62040-1	UL1741, UL9540, CEC listing	CE LVD, IEC 62109, EMC, AS/NZS 61000, AS4777	
Warranty	5 years (10 years, 15 years optional)			



Small Standard Container



10ft Energy Storage Container

- Built-in AC for Cooling
- Battery Cluster Max. Capacity: 157.4kWh
- PCS Rated Power: 250kW ~ 300kW
- Max. Capacity: 314.8kWh ~ 472.2kWh

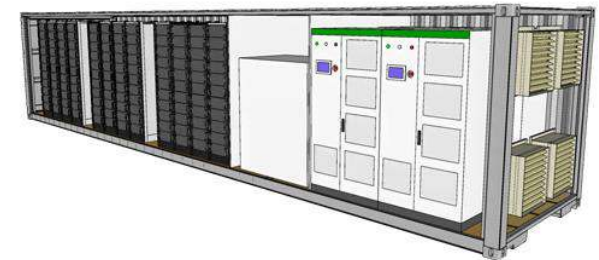
Medium Standard Container



20ft Energy Storage Container

- Built-in AC for Cooling
- Battery Cluster Max. Capacity: 157.4kWh
- PCS Rated Power: 0.5MW ~ 1MW
- Max. Capacity: 1MWh ~ 1.416MWh

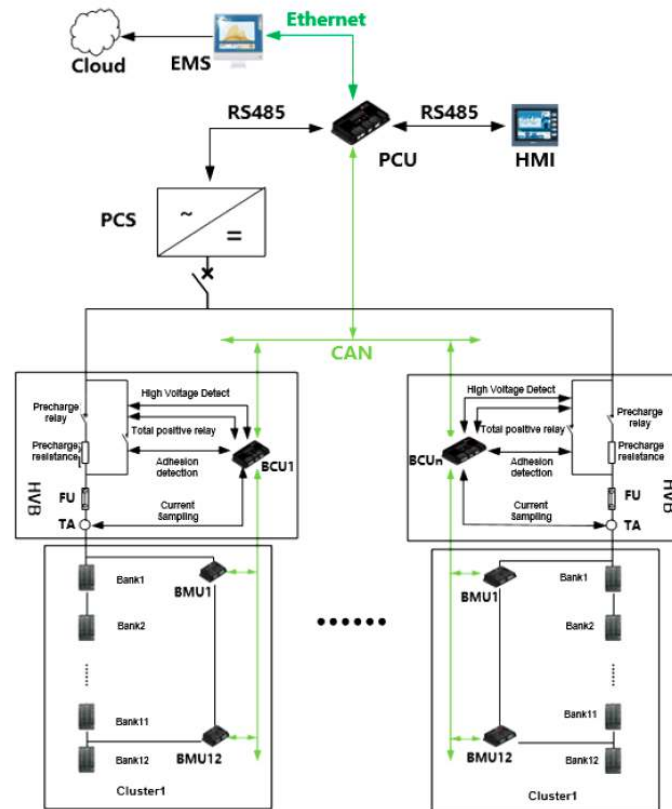
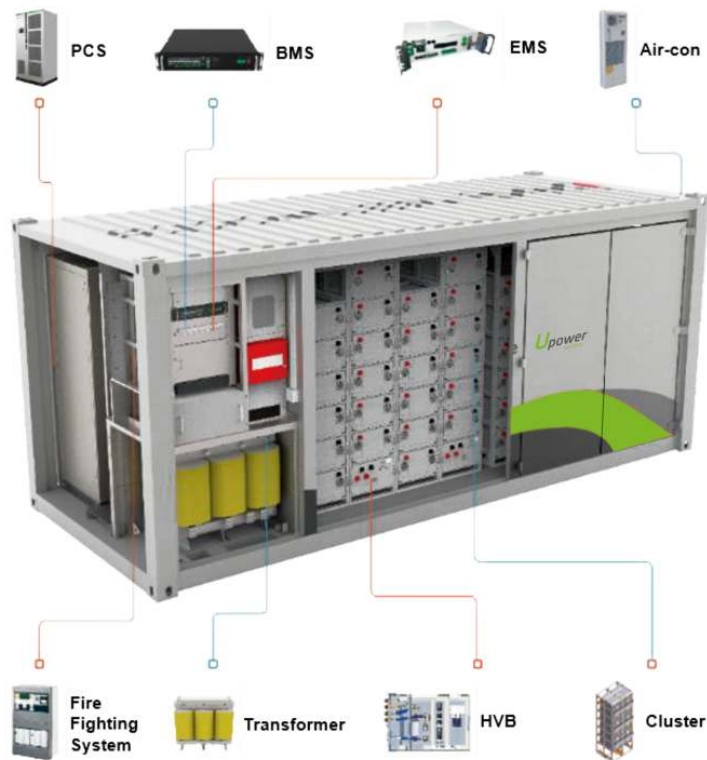
Large Standard Container



40ft Energy Storage Container

- Built-in AC for Cooling
- Battery Cluster Max. Capacity: 157.4kWh
- PCS Rated Power: 0.5MW ~ 1MW
- Max. Capacity: 2.676MWh ~ 3.148MWh

Upower Energy Storage System Structure

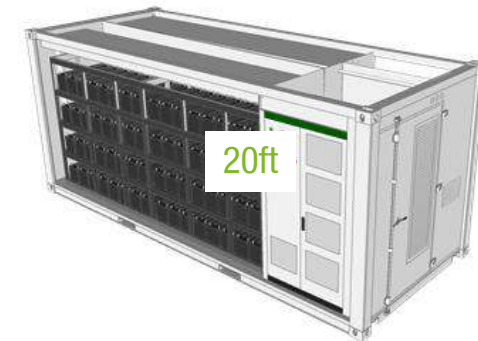


- DC Part**
- Cell
- Module
- Battery Cluster
- High-Voltage Box
- DC Panel
- BMS
- Container
- HVAC System
- Fire Fighting System
- AC Part**
- Energy Storage Converter
- Power Distribution
- Olation Transformer

System Specification							
Container	10ft		20ft		40ft		
PCS Power	250kW		500kW	None	1000kW	2000kW	None
Battery Capacity	300kWh	472kWh	1000kWh	1400kWh	2833kWh	2200kWh	3150kWh
Charge/Discharge Rate	0.5C/1C	0.5C/0.5C	0.5C/0.5C	N/A	0.5C/0.5C	0.5C/1C	N/A
DC Rated Voltage	768VDC						
DC Voltage Range	672 - 864VDC						
System Efficiency	>88%						
Battery Efficiency	>95%						
PCS Parameter-Grid Connection Mode							
DC Input Voltage	600 - 900VDC						
AC Output Voltage	380VAC						
Maximum DC Current	437 - 3492A						
AC Output Current	380 - 3040A						
Frequency	50/60Hz (±2.5Hz)						
Voltage Distortion Rate	≤3%						
Power Factor	0.1 ~ 1 Lead or lag (adjustable)						
PCS Parameter-Off Grid Mode							
DC Input Voltage	600 - 900V						
Maximum DC Current	437 - 3492A						
AC Output Voltage	380V (±10% configurable)						
AC Output Current	380 - 3040A (Short-term overload 1.1 times)						
Maximum AC Power	275 - 2200kW						
Voltage Distortion Rate	≤2%						
Frequency	50/60Hz						
Power Factor	0.1 ~ 1 Lead or lag (adjustable)						
Over Load Capacity	10min: 105 ~ 115%, 1min: 115 ~ 125%, 200ms: 125 ~ 150%						



System Specification			
Battery-Module Parameter			
Battery Type	LFP (LiFePO ₄)		
Module Type	64V/205Ah		
Module Weight	20 (20S1P)		
Max.Charge/Discharge Rate	205A (1C discharge)		
Rated Voltage	64V		
Module Capacity	13.1kWh		
Module Size	477mm*603mm*280mm		
Module Weight	100kg		
Operation Environment & Other Parameter			
Operation Temperature	0°C ~ 45°C		
Storage Temperature	-20°C ~ 50°C		
Humidity	≤95%		
Altitude	≤2000m		
Communication Type	TCP/IP, CAN, RS-485		
IP Rate	IP 54		
Size (L*W*H) mm	10ft	20ft	40ft
	3029*2438*2591	6058*2438*2591	12192*2438*2591
Certification	IEC62619 G83, IEC61000-6 B59, UL1642 G99		





The Best Lithium Solutions

05

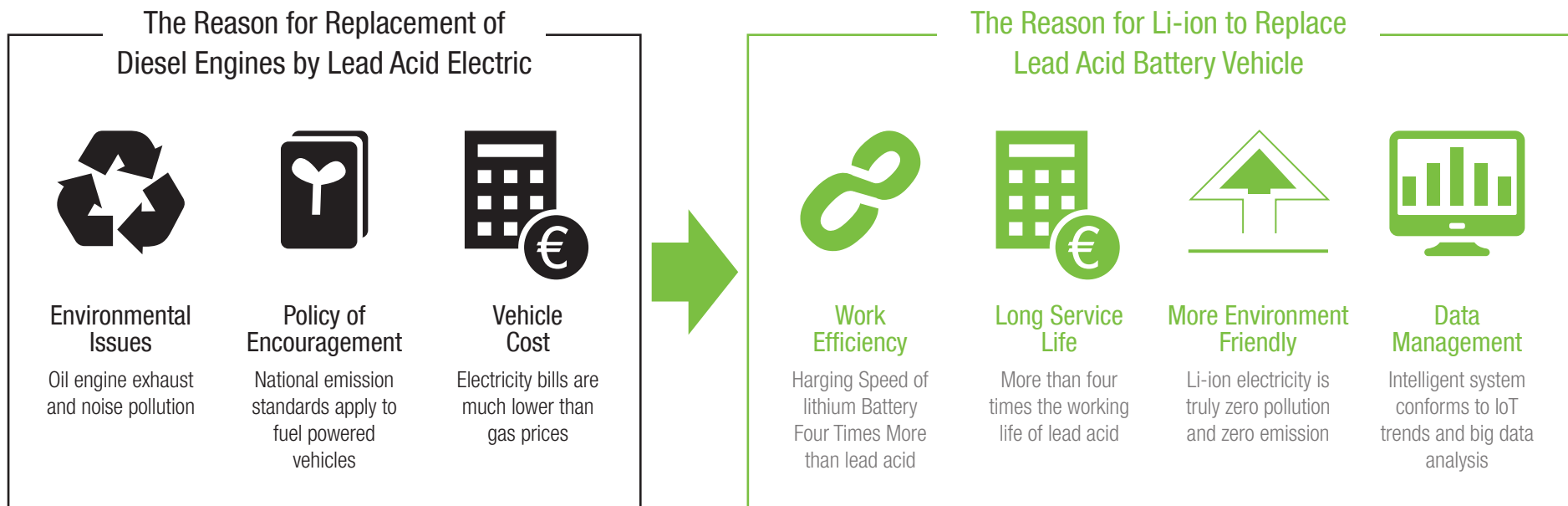


Material Handling Solution

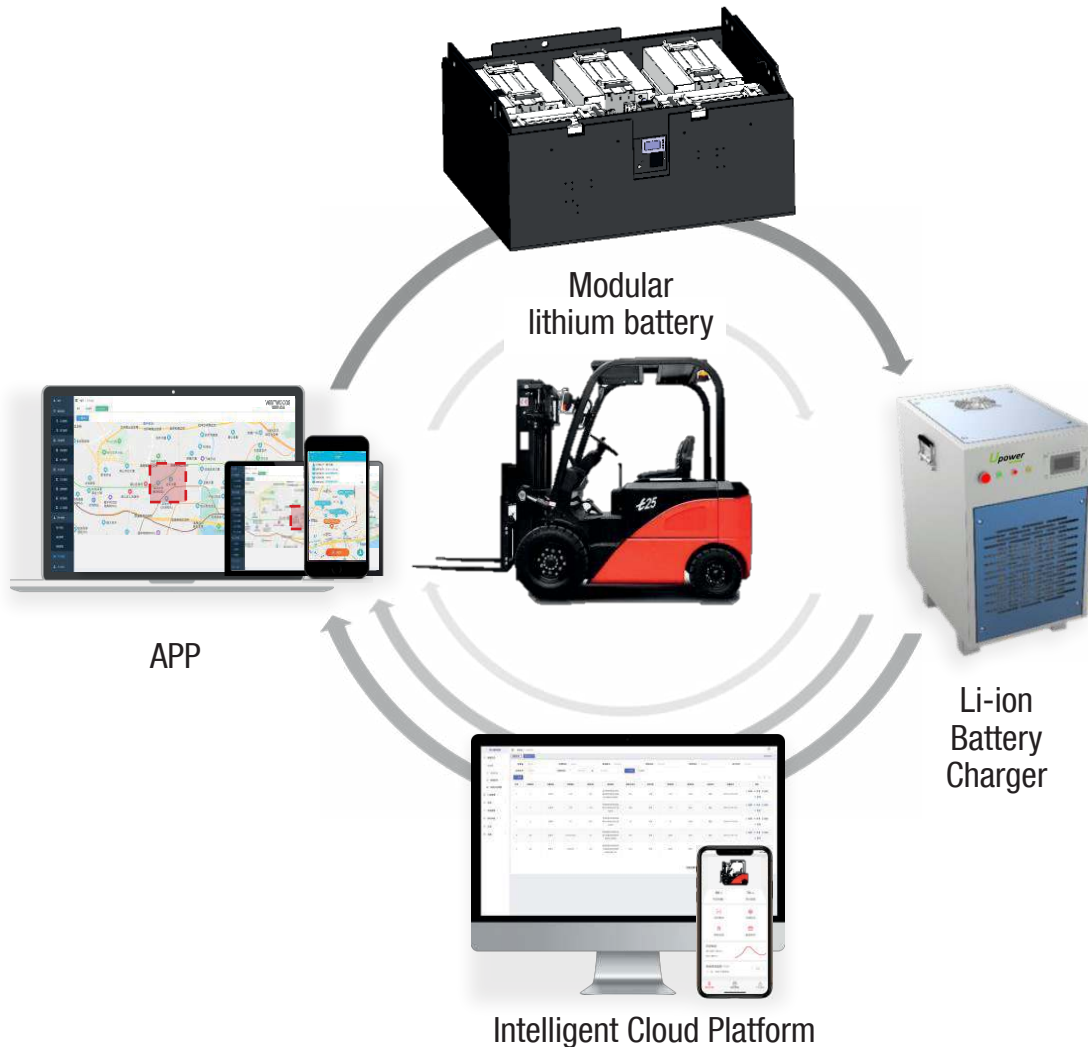
Forklift Lithium Battery is an Inevitable Trend



- Electric replacement of fuel is inevitable.
- Lithium ion to replace lead acid is the trend now.
- Lithium ion for forklift has just started (less than 5%).



Upower Forklift Lithium Battery System Solution



Modular Design

Lithium batteries and chargers are all built in modular, which can be combined quickly.



Plug and Play

Various types of power plug in and connection solutions, battery autonomous management, highly integrated.



Cloud Diagnostics and Upgrades

Different from traditional regional service teams using cloud management advantages to achieve remote maintenance.



Experienced and of High Quality

Battery rental market experience, mature and rigorous development team and quality control.

Upower Forklift Lithium Battery System Solution

Basic Parameters	UE-PF24210	UE-PF24230
Nominal Capacity	210Ah	230Ah
Nominal Voltage	25.6V	
Nominal Energy	5376Wh	5888Wh
Dimension (W*D*H)	538*187*305mm	
Weight	Approx. 41kg	Approx. 43kg
IP Class	IP54	
Charge Voltage	29.2V	
Cut-off Voltage	20V	
Max. Continuous Charge Current	100A	
Max. Continuous Discharge Current	100A	
Allowed Charge Temperature	0°C - 45°C	
Allowed Discharge Temperature	-20°C - 55°C	
Operation Humidity	≤85% RH	
Communication Interfaces	CAN	
Optional	Buzzer/HMI/Reset switch	

UE-PF 24V series compatible with pallet forklift



Upower Forklift Lithium Battery System Solution



Basic Parameters	UE-PF48410	UE-PF48460
Nominal Capacity	410Ah	460Ah
Nominal Voltage	51.2V	
Nominal Energy	20992Wh	23552Wh
Dimension (W*D*H)	830*550*460mm	
Weight	Approx. 200kg	
IP Class	IP54	
Charge Voltage	58.4V	
Cut-off Voltage	40V	
Max. Continuous Charge Current	200A	
Max. Continuous Discharge Current	350A	
Allowed Charge Temperature	0°C - 45°C	
Allowed Discharge Temperature	-20°C - 55°C	
Operation Humidity	≤85% RH	
Communication Interfaces	CAN	
Optional	Buzzer/HMI/Reset switch	

UE-PF 48V series compatible with 1.5T-2.5T Counter balanced forklift



Upower Forklift Lithium Battery System Solution



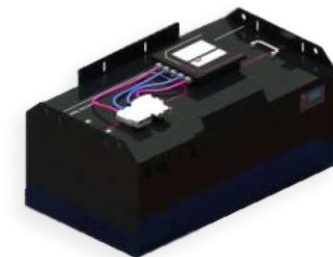
Basic Parameters	UE-PF80410	UE-PF80460
Nominal Capacity	410Ah	460Ah
Nominal Voltage	76.8V	
Nominal Energy	31488Wh	35328Wh
Dimension (W*D*H)	1020*640*470mm	
Weight	Approx. 300kg	
IP Class	IP54	
Charge Voltage	87.6V	
Cut-off Voltage	60V	
Max. Continuous Charge Current	200A	
Max. Continuous Discharge Current	350A	
Allowed Charge Temperature	0°C - 45°C	
Allowed Discharge Temperature	-20°C - 55°C	
Operation Humidity	≤85% RH	
Communication Interfaces	CAN	
Optional	Buzzer/HMI/Reset switch	

UE-PF VPF 80V series compatible with 3T-3.5T Counter balanced forklift



Forklift Compatible List

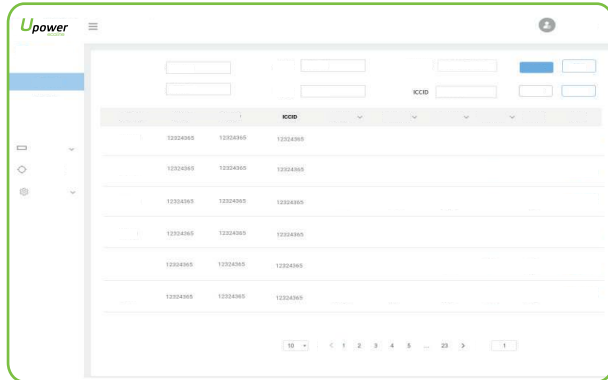
Upower Battery	Forklift Brand	Model
UE-PF Series - 24V	41Liftstar	CBD20-460
		CBD20-930
	TCM	EPT20-20RAS (M)
	HangCha	CBD20-ABC1S
	Jungheinrich	ERE120N
	NICHYU	TPS20
		T16, T18, T20
	Linde	T20AP/SP, T24AP/SP
		TPS20
	Rocla	TPE20
E-P EQUIPMENT		EPT20
UE-PF Series - 48V	TCM	FB10, FB15
		FB20-W
		FB25-W
	NICHYU	FB10P/14P/15P/18P
		FB20P
		FB25P
	TOYOTA	8FBN15-18
		8FBN20
		8FBN25
	TEU	FB20
FB25		



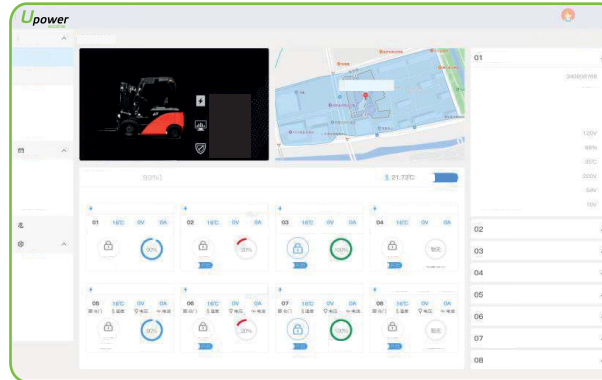
Intelligent Cloud Platform Function Module



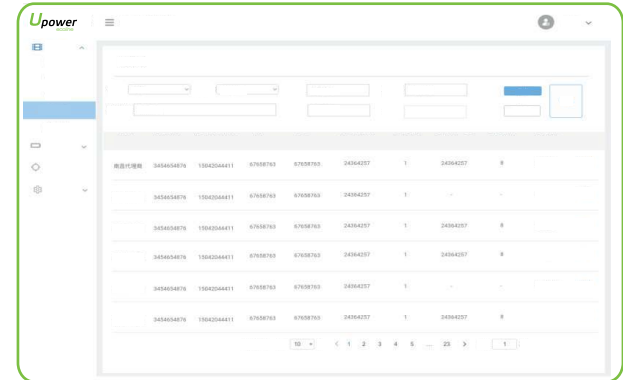
Battery Management



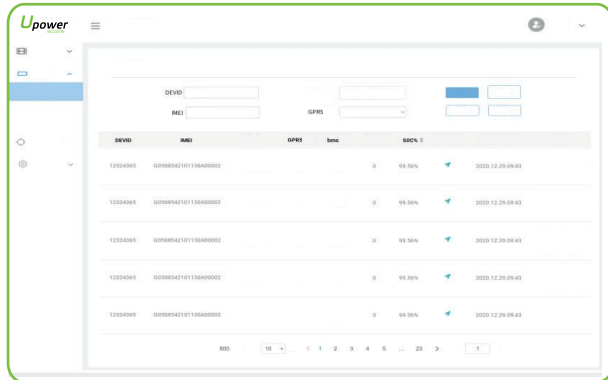
Collect User Usage Habits



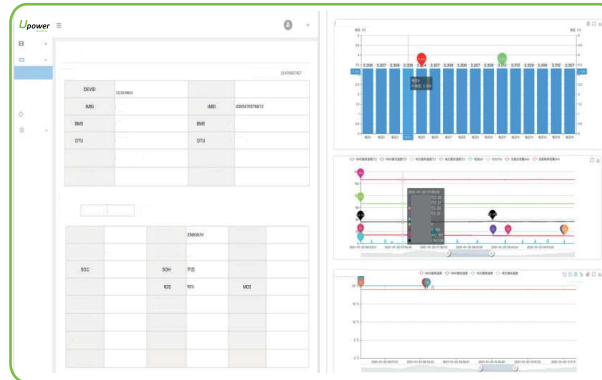
Alarm



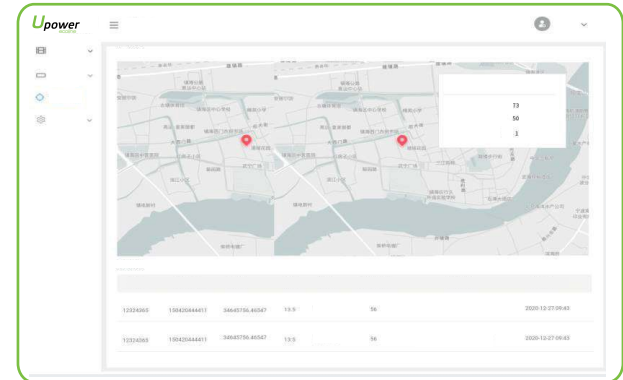
Remote Diagnostics



OTA



Vehicle Track





Mobility Solution



E-Motor with Battery Replacement



Recreational Vehicle



E-Golf Cart



Tread Bear

Where You Go, Where Is Adventure

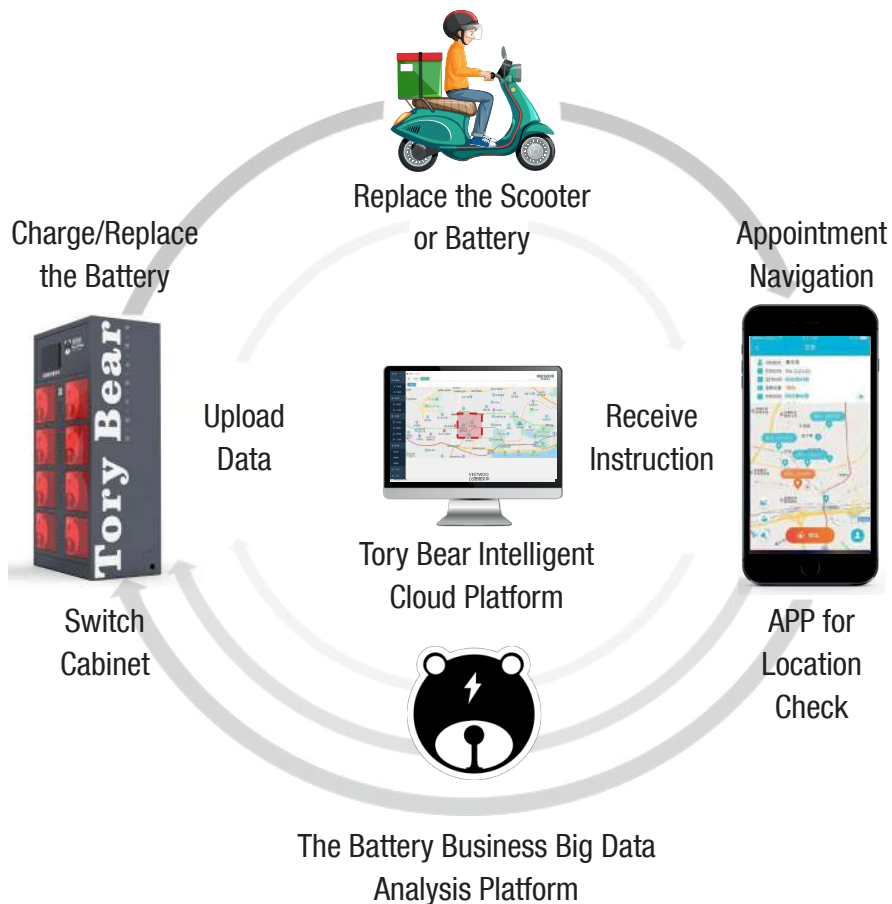
Tread Bear Electric Replacement
Scheme for Two Wheelers

Introduction - Intelligent Service Platform & Mobile Power Managers



The Best Lithium Solutions

06



Mobile Power Manager

Scan QR Code

Code scanning for power change, support appointme

Automatic Positioning & Navigation Services

Automatically recommend the nearest site, rent electricity, change electricity, vehicle rental quick check

Operator Management Platform

Agent management system, frequency of electricity changes, income, bills

Complete Record

User data, balance, deposit, electricity changing records, user behavior analysis

Comprehensive Function

Fault Rescue

Power replacement failure, code scanning problem 24 hours rescue



Tory Bear - Intelligent Li-ion battery e-motor Series

Tory bear intelligent li-ion battery e-motor meets the requirements of the new national standard [GB/T 17761 2018](#) and holds the CCC certificate issued by the national certification In line with the national licensing standards Tory bear from the supporting/preparation/final assembly/testing and other links. With "Harley" "Benell" "KEEWAY" and other international brands co-production.

F6 Series

- Equipments: 800W small electric friction motor, 12 tube yuanlong row plug controller, 2.75 - 10 zhenxin tires, front and rear authentic hydraulic shock absorption, LCD large screen instrument, LED headlights, 48V/60V universal.
- Vehicle parameters:
 - Outline specification (length, width and height): 1700-700-1060.
 - Tires: 2.75 - 10.
 - The wheelbase: 1245.
 - Vehicle weight: 55kg.
 - Color choice: deep ocean blue, lithium metal gray, silk white, laser red, alloy light.

Small Eagle Series

- Configuration: 580W small electric friction motor, 9 tube SAYIN row plug controller, 2.75 - 10 Guiluer tires, front and rear real hydraulic shock, LCD large screen meter, LED headlights, 48V/60V universal.
- Vehicle parameters:
 - Outline specification (length, width and height): 1650-660-1085.
 - Tires: 2.75 - 10.
 - The wheelbase: 1230.
 - Naked car heavy: 52kg.
 - Color choice: claret, bright black, sapphire blue, glass gray, silk white.



Product Parameters

Battery Size	15.5cm*18.3cm*32cm	Nominal Voltage	48V
Maximum Charging Voltage	54.75V	Maximum Charging Current	15A
Down Voltage	37.5V	Rated Capacity	30Ah
Working Environment Temperature	5°C - 65°C	Storage Temperature	0°C - 40°C
Battery Discharge Temperature	-20°C - 60°C	Battery Charging Temperature	0°C - 55°C

Product Advantages

1. High energy density, good circulation life to ensure long battery service life.
2. Support rapid replacement of battery, users do not need to wait anymore, uninterrupted continuation.
3. The meter electric quantity is uploaded by the battery system in realtime to solve the problem of realizing the traditional battery current.
4. Battery with remote monitoring system, background realtime check battery status.



Intelligent Battery Replacement Cabinet



Product Introduction

This lithium battery terminal power changing cabinet is an important part of green environmental protection, intelligent fire protection and safe city, and is also an indispensable supporting project for new retail development.

Battery replacement terminal [10 slots/6 slots/4 slots]

- Equip with operation management, user (B port /C port), battery rental supervision, intelligent power switch cabinet terminal power replace platform architecture.
- Mainstream power replace system functions, meeting 99% of customers' power replacing needs.
- The company is the only enterprise in the industry that uses artificial intelligence deep detection algorithm technology to escort the safe charging and replacing battery.
- It has complete and complete solutions, enterprise qualification and safety insurance guarantee.



Mobility Solution

Solution for Recreational Vehicle



The Best Lithium Solutions

06



Battery Solution for Recreational Vehicle (RV)

The core part of an RV's electrical system is a good battery bank.

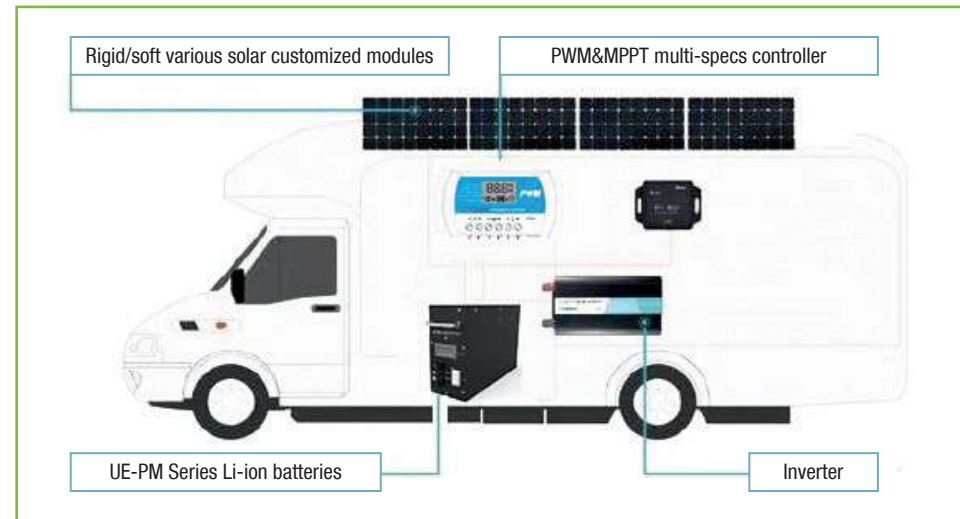
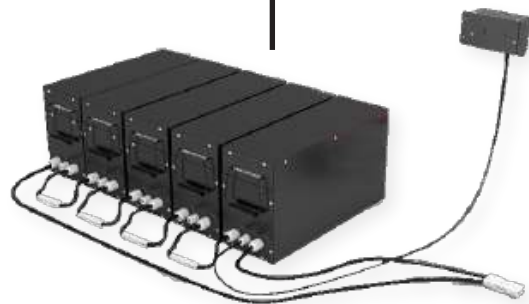
We offer LFP reliable battery solution for RV clients:

- Small spaces requirement, batteries can be placed inside your RV or even under your bed.
- Make longer life than VRLA.
- Easier to installation, maximum parallel to 1000Ah.
- Green technology and Non toxic.

Item	12V Module
Rated Voltage	12.8V
Nominal Capacity	205/230Ah
Maximum Continuous Charge Current	100A
Maximum Continuous Discharge Current	120A
Weight	23kg
Size	315*190*280mm



Battery Solution for Recreational Vehicle (RV)



Mobility Solution

Solution for Light Electrical Vehicle



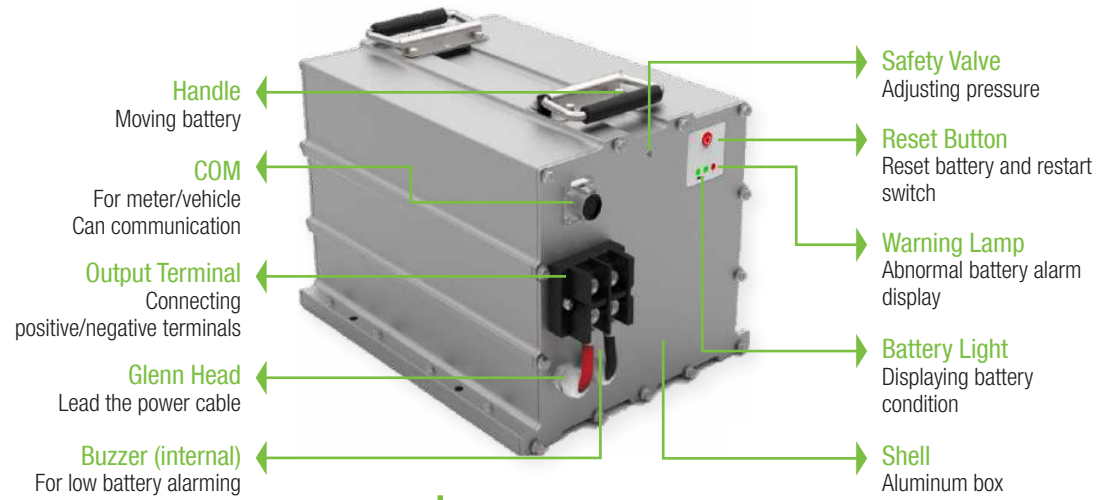
The Best Lithium Solutions

06



Battery Solution for Light Electrical Vehicle

No.	Item	Specs
1	Rated Voltage	51.2V
2	Nominal Capacity	80Ah
3	Nominal Energy	4096Wh
4	Limited Charge Voltage	58.4V
5	Voltage at End of Discharge	40V
6	Maximum Continuous Charge Current	60A
7	Maximum Continuous Discharge Current	80A
8	Operation Allowable Temperature Range	Charge: 0°C - 45°C Discharge: -20°C - 55°C
9	Operation Allowable Humidity Range	≤85% RH
10	Recommended Storage Temperature	15°C - 35°C
11	IP Protection Class	IP 65
12	Weight	39kg
13	Size	423*298*272mm
14	Communication	CAN



24V Series-Scooter



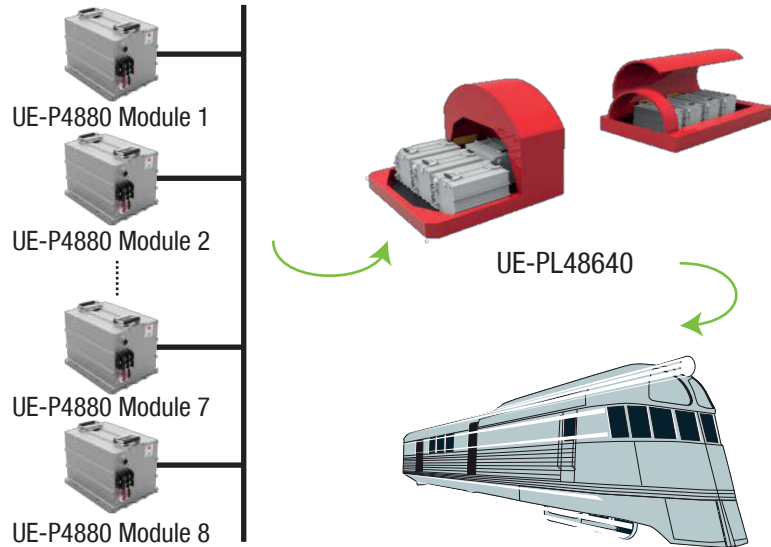
Item	Specs
Module	UE-P2480/24110*1
Cable Harness Annex	Power cable harness*1 set
	Communication cable harness*1 set (option)
Meter Module	UE-Y01*1 option
Fixed Support Module	Several fixed screw briquetting (come with the original vehicle)
Charger	Lithium/lead-acid battery charger *1 (optional)

48V Series-Golf Cart



Item	Specs
Module	UE-P4880*2
Cable Harness Annex	Power cable harness*1 set
	Communication cable harness*1 set
Meter Module	UE-Y01*1 option
Fixed Support Module	Several fixed screw briquetting (come with the original vehicle)
Charger	Lithium/lead-acid battery charger *1 (optional)

48V Series-Tour Train



Item	Specs
Battery Module	4880*8
Cable Harness Annex	Power cable harness*1 set
	Communication cable harness*1 set
Meter Module	UE-Y01*1
Confluence Annex	Customized confluence box*2
Fixed Support Module	Customized base panel*2
Charger	6.6kW lithium vehicle charger*1

72V Series-Tour Cart



Item	Specs
Battery Module	2480*6
General Controller Module	High voltage box*1
Cable Harness Annex	Power cable harness*1 set (interior)
	Communication cable harness*1 set (interior)
Meter Module	UE-Y01*1
Fixed Support Module	Several fixed screw briquetting (come with the vehicle) or fixed screw bolts
Charger	3.3kW lithium vehicle charger*1 (option)



The Best Lithium Solutions

La Dehesa Industrial Area
2 Dehesa Vieja Street
Madrid, Spain
28052



T. +34 918 021 649
F. +34 917 750 542
info@masterbattery.es
www.masterbattery.es